

UBE2H (UbcH2) [6His-tagged]

E2 – Ubiquitin Conjugating Enzyme

Alternate Names: 6.3.2.19, E2-20K, UBC8, UbcH, UbcH2, Ubiquitin-conjugating enzyme E2H

Cat. No. **62-0078-100**
Lot. No. **1829**

Quantity: 100 µg
Storage: -70°C

FOR RESEARCH USE ONLY

NOT FOR USE IN HUMANS



CERTIFICATE OF ANALYSIS Page 1 of 2

Background

The enzymes of the ubiquitylation pathway play a pivotal role in a number of cellular processes including regulated and targeted proteasomal degradation of substrate proteins. Three classes of enzymes are involved in the process of ubiquitylation; activating enzymes (E1s), conjugating enzymes (E2s) and protein ligases (E3s). UBE2H is a member of the E2 conjugating enzyme family and cloning of the human gene was first described by Kaiser *et al.* (1994). Human UBE2H shares 54% identity with its yeast homologue (UbcH8) and full length forms of both the human and yeast enzymes showed similar enzymatic activities *in vitro* by catalyzing the ubiquitylation of histones (Kaiser *et al.*, 1995). In skeletal muscle whole cell extracts TNF α up-regulates and increases the conjugating activity of UBE2H *in vitro* via binding of NF κ B to the promoter region of the gene (Li *et al.*, 2003). UBE2H has been mapped to a region on chromosome 7 (Hayashida *et al.*, 2000) and the gene has been identified as a candidate for involvement in an autistic disorder with neurodevelopmental complications. Single strand conformation analysis demonstrated a significant association between a polymorphism in the UBE2H gene suggesting it could be one of the 7q-susceptibility loci for Autistic Disorder (Vourc'h *et al.*, 2003). An association has also been made between UBE2H and the motor neuron disorder amy-

Continued on page 2

Physical Characteristics

Species: human

Source: *E. coli* expression

Quantity: 100 µg

Concentration: 1 mg/ml

Formulation: 50 mM HEPES pH 7.5,
150 mM sodium chloride, 2 mM
dithiothreitol, 10% glycerol

Molecular Weight: ~23 kDa

Purity: >98% by InstantBlue™ SDS-PAGE

Stability/Storage: 12 months at -70°C;
aliquot as required

Protein Sequence:

M G S S H H H H H S S G L E V L F Q G
P G S M S S P S P G K R R M D T D V
V K L I E S K H E V T I L G G L N E F V V K
F Y G P Q G T P Y E G G V W K V R V D L P D
K Y P F K S P S I G F M N K I F H P N I D E A S
G T V C L D V I N Q T W T A L Y D L T N I F E S
F L P Q L L A Y P N P I D P L N G D A A A M
Y L H R P E E Y K Q K I K E Y I Q K Y A T E E
A L K E Q E E G T G D S S S E S S M S D F
S E D E A Q D M E L

Tag (**bold text**): N-terminal His

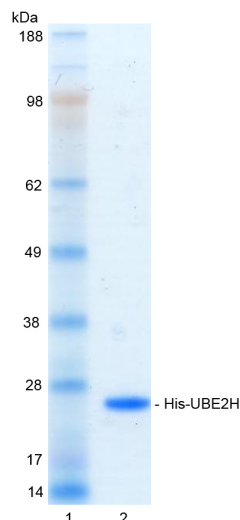
Protease cleavage site: PreScission™ (LEVL**FQ**▼GP)

UBE2H (regular text): Start **bold italics** (amino acid residues 1-183)

Accession number: NP_003335

Quality Assurance

Purity:
4-12% gradient SDS-PAGE
InstantBlue™ staining
Lane 1: MW markers
Lane 2: 1 µg His-UBE2H



Protein Identification:

Confirmed by mass spectrometry.

E2-Ubiquitin Thioester Loading Assay:

The activity of His-UBE2H was validated by loading E1 UBE1 activated ubiquitin onto the active cysteine of the His-UBE2H E2 enzyme via a transthiolation reaction. Incubation of the UBE1 and His-UBE2H enzymes in the presence of ubiquitin and ATP at 30°C was compared at two time points, T₀ and T₁₀ minutes. Sensitivity of the ubiquitin/His-UBE2H thioester bond to the reducing agent DTT was confirmed.



www.ubiquigent.com
Dundee, Scotland, UK

ORDERS / SALES SUPPORT

International: +1-617-245-0003
US Toll-Free: 1-888-4E1E2E3 (1-888-431-3233)
Email: sales.support@ubiquigent.com

UK HQ and TECHNICAL SUPPORT

International: +44 (0) 1382 381147 (9AM-5PM UTC)
US/Canada: +1-617-245-0020 (9AM-5PM UTC)
Email: tech.support@ubiquigent.com

Email services@ubiquigent.com for enquiries regarding compound profiling and/or custom assay development services.

© Ubiquigent 2011. Unless otherwise noted, Ubiquigent, Ubiquigent logo and all other trademarks are the property of Ubiquigent, Ltd.

Limited Terms of Use: For research use only. Not for use in humans or for diagnostics. Not for distribution or resale in any form, modification or derivative OR for use in providing services to a third party (e.g. screening or profiling) without the written permission of Ubiquigent, Ltd.

Lot-specific COA version tracker: v1.0.0

UBE2H (UbcH2) [6His-tagged]

E2 – Ubiquitin Conjugating Enzyme

Alternate Names: 6.3.2.19, E2-20K, UBC8, UbcH, UbcH2, Ubiquitin-conjugating enzyme E2H

Cat. No. **62-0078-100**
Lot. No. **1829**

Quantity: 100 µg
Storage: -70°C



FOR RESEARCH USE ONLY

NOT FOR USE IN HUMANS

CERTIFICATE OF ANALYSIS Page 2 of 2

Background

Continued from page 1

trophic lateral sclerosis (ALS) where single strand conformation polymorphism (SSCP) analysis identified a known and sporadic polymorphism in the gene (Martin *et al.*, 2008).

References:

Hayashida S, Yamasaki K, Asada Y, Soeda E, Niikawa N, Kishino T (2000) Construction of a physical and transcript map flanking the imprinted MEST/PEG1 region at 7q32. *Genomics* **66**, 221-5.

Kaiser P, Mandl S, Schweiger M, Schneider R (1995) Characterization of functionally independent domains in the human ubiquitin conjugating enzyme UbcH2. *FEBS Lett* **377**, 193-6.

Kaiser P, Seufert W, Hofferer L, Kofler B, Sachsenmaier C, Herzog H, Jentsch S, Schweiger M, Schneider R (1994) A human ubiquitin-conjugating enzyme homologous to yeast UBC8. *J Biol Chem* **269**, 8797-802.

Li YP, Lecker SH, Chen Y, Waddell ID, Goldberg AL, Reid MB (2003) TNF-alpha increases ubiquitin-conjugating activity in skeletal muscle by up-regulating UbcH2/E220k. *FASEB J* **17**, 1048-57.

Martin I, Vourc'h P, *et al.* (2009) Association study of the ubiquitin conjugating enzyme gene UBE2H in sporadic ALS. *Amyotroph Lateral Scler* **10**, 432-5.

Vourc'h P, Martin I, Bonnet-Brilhault F, Marouillat S, Barthelemy C, Pierre Muh J, Andres C (2003) Mutation screening and association study of the UBE2H gene on chromosome 7q32 in autistic disorder. *Psychiatr Genet* **13**, 221-5.



www.ubiquigent.com
Dundee, Scotland, UK

ORDERS / SALES SUPPORT

International: +1-617-245-0003
US Toll-Free: 1-888-4E1E2E3 (1-888-431-3233)
Email: sales.support@ubiquigent.com

UK HQ and TECHNICAL SUPPORT

International: +44 (0) 1382 381147 (9AM-5PM UTC)
US/Canada: +1-617-245-0020 (9AM-5PM UTC)
Email: tech.support@ubiquigent.com

Email services@ubiquigent.com for enquiries regarding compound profiling and/or custom assay development services.

© Ubiquigent 2011. Unless otherwise noted, Ubiquigent, Ubiquigent logo and all other trademarks are the property of Ubiquigent, Ltd.

Limited Terms of Use: For research use only. Not for use in humans or for diagnostics. Not for distribution or resale in any form, modification or derivative OR for use in providing services to a third party (e.g. screening or profiling) without the written permission of Ubiquigent, Ltd.

Lot-specific COA version tracker: v1.0.0