

# Di-ubiquitin (K48-linked) [untagged]

Ubiquitin/Ubiquitin-Like Protein Dimer



Cat. No. 60-0106-050

Lot. No. 30087

Quantity: 50 µg

Storage: -70°C

FOR RESEARCH USE ONLY

NOT FOR USE IN HUMANS

CERTIFICATE OF ANALYSIS Page 1 of 2

## Background

Ubiquitin (Ub) is a highly conserved 76 amino-acid protein found throughout eukaryotic cells. A vast number of cellular processes, including targeted protein degradation, cell cycle progression, DNA repair, protein trafficking, inflammatory response, virus budding, and receptor endocytosis, are regulated by Ub-mediated signalling; where the target protein is tagged by single or multi-monomeric Ub (monomeric Ub attached to multiple sites on the substrate) or a polymeric chain of Ubs (Fushman *et al.*, 2010). This post-translational modification is tightly controlled by an enzymatic cascade involving several enzymes (E1, E2, and E3) and occurs through either an isopeptide bond between the C-terminal Glycyl residue of Ub and the epsilon amino group of a Lysyl residue on a target protein or through a peptide bond between the C-terminal Glycyl residue of Ub and the N-terminal amine on a further Ub. In the former (isopeptide bond-linked) case the substrate protein may either be ubiquitin itself – thus leading to the generation of poly-ubiquitin chains – or another target protein (Fushman *et al.*, 2010). Thus, ubiquitin can be attached to a substrate either as a monomer or as a poly-ubiquitin chain. Further – depending on their linkage type (M1, K6, K11, K27, K29, K33, K48 and K63 linked) – the Ub chains can take different structural forms. Chains containing all eight possible Ub linkages have been found in living cells and different ubiquitin chain types may encode different biological signals, allowing this single protein to mediate many diverse functions (Komander 2009; Weeks *et al.*, 2009; Walczak *et al.*, 2012). The functionality of Ub chains is most commonly associated with their attachment to substrate proteins but there is also evidence that they may also play a role in cellular signalling as free chains (Braten *et al.*, 2012).

Continued on page 2

## Physical Characteristics

### Protein Sequence:

```
MQIFVKTLTGKTITLEVEPSDTIENVKAKIQDKEGIPPDQORLIFAGKQLEDGRTLSDYNIQKESTLHLVLRGG  
MQIFVKTLTGKTITLEVEPSDTIENVKAKIQDKEGIPPDQORLIFAGKQLEDGRTLSDYNIQKESTLHLVLRGG  
K48
```

**Species:** human

**Molecular Weight:** 17.1 kDa

**Source:** enzyme catalysed

**Purity:** >98% by InstantBlue™ SDS-PAGE

**Quantity:** 50 µg

**Stability/Storage:** 12 months at -70°C; aliquot as required

**Concentration:** 0.5 mg/ml

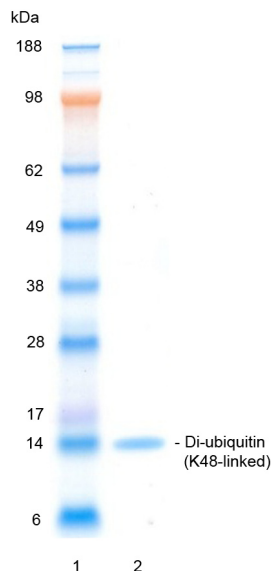
**Accession Number:** P62987

**Formulation:** 50 mM HEPES pH 7.5, 150 mM NaCl<sub>2</sub>, 2 mM DTT, 10% Glycerol

## Quality Assurance

### Purity:

4-12% gradient SDS-PAGE  
InstantBlue™ staining  
Lane 1: MW markers  
Lane 2: 1 µg Di-ubiquitin (K48-linked)



### Purity of the linkage type:

The linkage type (K48) was confirmed by tandem mass spectrometry.

### Di-ubiquitin cleavage assay:

The capacity of the di-ubiquitin substrate to be cleaved was tested using a promiscuous – with respect to ubiquitin linkage specificity – deubiquitylase (GST-USP2). Incubation of the di-ubiquitin for 1 hour at 37°C was compared either in the absence (Lane 2) or presence (Lane 3) of GST-USP2. The reaction products were compared alongside two control samples containing either mono-ubiquitin (Lane 4) or GST-USP2 (Lane 5) only. Cleavage of the di-ubiquitin and generation of mono-ubiquitin was determined by running reactions on a 4-12% SDS-PAGE gel and staining with InstantBlue™ (Lane 1; molecular weight markers).



www.ubiquigent.com  
Dundee, Scotland, UK

### ORDERS / SALES SUPPORT

International: +1-617-245-0003  
US Toll-Free: 1-888-4E1E2E3 (1-888-431-3233)  
Email: sales.support@ubiquigent.com

### UK HQ and TECHNICAL SUPPORT

International: +44 (0) 1382 381147 (9AM-5PM UTC)  
US/Canada: +1-617-245-0020 (9AM-5PM UTC)  
Email: tech.support@ubiquigent.com

Email services@ubiquigent.com for enquiries regarding compound profiling and/or custom assay development services.

© Ubiquigent 2012. Unless otherwise noted, Ubiquigent, Ubiquigent logo and all other trademarks are the property of Ubiquigent, Ltd.

Limited Terms of Use: For research use only. Not for use in humans or for diagnostics. Not for distribution or resale in any form, modification or derivative OR for use in providing services to a third party (e.g. screening or profiling) without the written permission of Ubiquigent, Ltd.

Lot-specific COA version tracker: v1.0.0

# Di-ubiquitin (K48-linked) [untagged]

Ubiquitin/Ubiquitin-Like Protein Dimer



Cat. No. 60-0106-050

Lot. No. 30087

Quantity: 50 µg

Storage: -70°C

FOR RESEARCH USE ONLY

NOT FOR USE IN HUMANS

CERTIFICATE OF ANALYSIS Page 2 of 2

## Background

Continued from page 1

A mass spectrometry-based study found that K48 linkages account for the largest percentage (29%) of all yeast ubiquitin-ubiquitin linkages. The relative abundance of the other linkages were K6 (11%), K11 (28%), K27 (9%), K29 (3%), K33 (4%) and K63 (16%) (Xu *et al.*, 2009). The attachment of K48-linked polyubiquitin chains to proteins is a universal signal for degradation by the proteasome. Ubiquitin chains form distinct structures based on their linkage. K63-linked chains adopt an extended conformation with little interaction between adjacent ubiquitins. In contrast, K11- and K48-linked chains form compact, globular structures with significant ubiquitin-ubiquitin contact (Schaefer *et al.*, 2011). Lys48-linked ubiquitin tetramers are the minimal recognition motif for the proteasome and a K48-ubiquitinated substrate will be degraded within minutes in cells (Thrower *et al.*, 2000).

### References:

Braten O, Shabek N, Kravtsova-Ivantsiv Y, Ciechanover A (2012) Generation of free ubiquitin chains is upregulated in stress, and facilitated by the HECT domain ubiquitin ligases UFD4 and HUL5. *Biochem J* **444**, 611-617.

Fushman D, Walker O (2010) Exploring the linkage dependence of polyubiquitin conformations using molecular modeling. *Journal of Molecular Biology* **395**, 803-814.

Komander D (2009) The emerging complexity of protein ubiquitination. *Biochem Soc Trans* **37**, 937-953.

Schaefer JB, Morgan DO (2011) Protein-linked ubiquitin chain structure restricts activity of deubiquitinating enzymes. *J Biol Chem* **286**, 45186-45196.

Thrower JS, Hoffman L, Rechsteiner M, Pickart CM (2000) Recognition of the polyubiquitin proteolytic signal. *The EMBO Journal* **19**, 94-102.

Walczak H, Iwai K, Dikic I (2012) Generation and physiological roles of linear ubiquitin chains. *BMC Biol* **10**, 23.

Weeks SD, Grasty KC, Hernandez-Cuevas L, Loll PJ (2009) Crystal structures of Lys-63-linked tri- and di-ubiquitin reveal a highly extended chain architecture. *Proteins* **77**, 753-759.

Xu P, Duong DM, Seyfried NT, Cheng D, Xie Y, et al., (2009) Quantitative proteomics reveals the function of unconventional ubiquitin chains in proteasomal degradation. *Cell* **137**, 133-145.



www.ubiquigent.com  
Dundee, Scotland, UK

### ORDERS / SALES SUPPORT

International: +1-617-245-0003  
US Toll-Free: 1-888-4E1E2E3 (1-888-431-3233)  
Email: sales.support@ubiquigent.com

### UK HQ and TECHNICAL SUPPORT

International: +44 (0) 1382 381147 (9AM-5PM UTC)  
US/Canada: +1-617-245-0020 (9AM-5PM UTC)  
Email: tech.support@ubiquigent.com

Email services@ubiquigent.com for enquiries regarding compound profiling and/or custom assay development services.

© Ubiquigent 2012. Unless otherwise noted, Ubiquigent, Ubiquigent logo and all other trademarks are the property of Ubiquigent, Ltd.

Limited Terms of Use: For research use only. Not for use in humans or for diagnostics. Not for distribution or resale in any form, modification or derivative OR for use in providing services to a third party (e.g. screening or profiling) without the written permission of Ubiquigent, Ltd.

Lot-specific COA version tracker: v1.0.0