

# Mono and Polyubiquitylated Conjugates mAb (clone FK2), biotin-linked

Ubiquitin Conjugate Antibody



Cat. No. 68-0123-025  
Lot. No. 30126

Quantity: 25 µg  
Storage: -20°C

FOR RESEARCH USE ONLY

NOT FOR USE IN HUMANS

CERTIFICATE OF ANALYSIS Page 1 of 1

## Description

The anti-mono and polyubiquitylated conjugates mAb (FK2) demonstrates specific recognition for monoubiquitylated and polyubiquitylated proteins but shows no reactivity with free ubiquitin (Fujimuro *et al.* 1994). The anti-mono and polyubiquitylated conjugates mAb (FK2) has been extensively characterised and used not only to investigate ubiquitin chain formation on mono and polyubiquitylated proteins by Western blotting but also in the detection of intracellular polyubiquitin chains in immunoassays (Takada *et al.* 1995; Fujimuro *et al.* 2005). The biotin linked anti-mono and polyubiquitylated conjugates mAb (FK2) facilitates the detection of mono and polyubiquitylated conjugates with the use of a streptavidin HRP conjugate.

### References:

Fujimuro M, Sawada H, Yokosawa H (1994) Production and characterization of monoclonal antibodies specific to multi-ubiquitin chains of polyubiquitinated proteins. *FEBS Lett* 349 173-180.

Takada K, Nasu H, Hibi N, Tsukada Y, Ohkawa K, Fujimuro M, Sawada H, Yokosawa H (1995) Immunoassay for the quantification of intracellular multi-ubiquitin chains. *Eur J Biochem* 233 42-47.

Fujimuro M, Yokosawa H (2005) Production of antipolyubiquitin monoclonal antibodies and their use for characterization and isolation of polyubiquitinated proteins. *Methods Enzymol* 399 75-86.

## Physical Characteristics

**Clone:** FK2

**Isotype:** IgM

**Specificity:** Recognises mono and polyubiquitylated conjugates. Does not cross-react with free ubiquitin.

**Molecular Weight:** ~150 kDa

**Immunogen:** Crude preparation of polyubiquitylated lysozyme

**Source/Host:** BALB/c mouse implantation ascites

**Quantity:** 25 µg

**Concentration:** 1 mg/ml

**Formulation:** 10 mM phosphate buffer, 0.15 M NaCl pH 7.4, 0.1% sodium azide.

**Stability/Storage:** 12 months at -20°C; aliquot as required

## Quality Assurance

**Anti-Mono and Polyubiquitylated Conjugates mAb (FK2) Biotin-linked Antibody Activity Assay:** By Western blotting the specific recognition of mono and polyubiquitylated conjugates by the antibody over free ubiquitin was demonstrated (Figure 1).

A priming and extension assay was run containing, UBE1 [6His-tagged] (Cat# 61-0001), UBE2W [6His-tagged] (Cat# 62-0085), UBE2N [untagged] (Cat# 62-0047), UBE2V1 [untagged] (Cat# 62-0059), Ubiquitin (Cat# 60-0001), CHIP [untagged] (Cat# 63-0003) and ATP. Using the anti-mono and polyubiquitylated conjugates mAb (FK2) biotin-linked antibody, detection of polyubiquitin chains extending from mono-ubiquitylated CHIP (Lane 1) and free chains generated by UBE2N/UBE2V1 in the presence of CHIP (Lane 3) were observed. In the absence of CHIP, detection of free polyubiquitin chains generated by UBE2N/UBE2V1 (Lanes 5 and 7) and ubiquitylated E2 enzymes (Lanes 6 and 8) was observed (Figure 2).

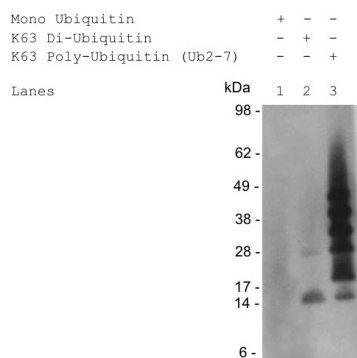


Figure 1

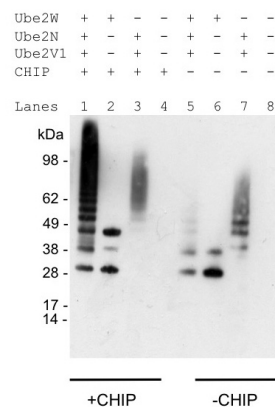


Figure 2



www.ubiquigent.com  
Dundee, Scotland, UK

### ORDERS / SALES SUPPORT

International: +1-617-245-0003  
US Toll-Free: 1-888-4E1E2E3 (1-888-431-3233)  
Email: sales.support@ubiquigent.com

### UK HQ and TECHNICAL SUPPORT

International: +44 (0) 1382 381147 (9AM-5PM UTC)  
US/Canada: +1-617-245-0020 (9AM-5PM UTC)  
Email: tech.support@ubiquigent.com

Email services@ubiquigent.com for enquiries regarding compound profiling and/or custom assay development services.

© Ubiquigent 2012. Unless otherwise noted, Ubiquigent, Ubiquigent logo and all other trademarks are the property of Ubiquigent, Ltd.

Limited Terms of Use: For research use only. Not for use in humans or for diagnostics. Not for distribution or resale in any form, modification or derivative OR for use in providing services to a third party (e.g. screening or profiling) without the written permission of Ubiquigent, Ltd.

Lot-specific COA version tracker: v1.0.0